

Häring supplied the roof structure for the bobsleigh complex at the 2022 Winter Olympics in China via its factory in Tianjin. It was made from a combination of steel and timber. Supports in the form of double glulam beams connected to a steel frame were manufactured by Häring in Tianjin. The engineering team from Switzerland was in charge of production and also helped with planning and the production drawings. A total volume of 971m<sup>3</sup> glulam was used for the overall.

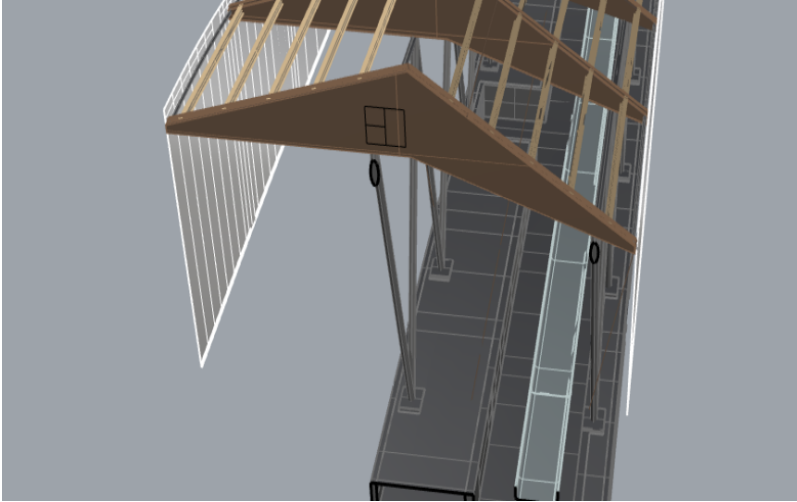
**Client**

MCC  
Häring Swiss Wood Structures Tianjin  
Ltd

**Architect**

China Architecture Design & Research  
Group  
BMEDI  
Planungsbüro Deyle GmbH + Ecosign  
Mountain Resort Planners Ltd

## Olympic Bobsleigh track



Olympic Bobsleigh track

